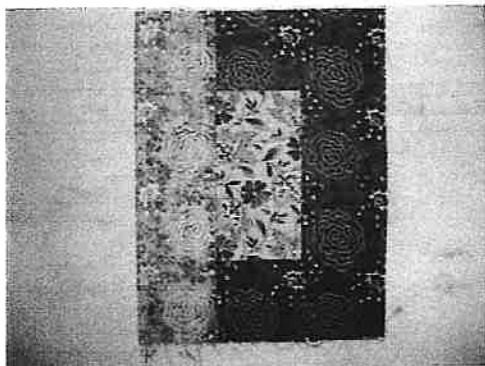
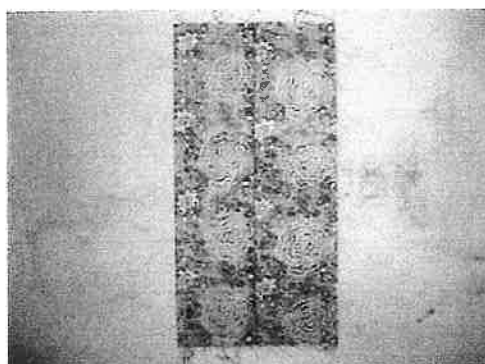


The first and easiest, "Square in a Square" block, is constructed like this. First place a 5" square in the middle of a 10" square. A definite color contrast between the 5 and 10 inch squares is a necessity in this method. Small prints, tone on tones, or plain fabrics work best.

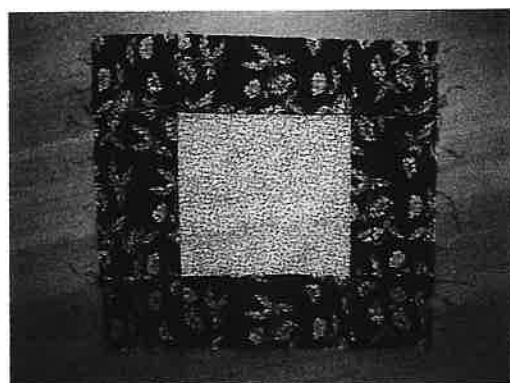
Fold one side of the 10" square to the middle of the 5" square and sew a 1/4" seam on the folded side.



Repeat with the other side. The edges of the 10" square should meet in the middle as shown below.



Iron open and repeat the process with the other 2 sides. The result is a square in a square block.



www.handicraftsbypeg.com